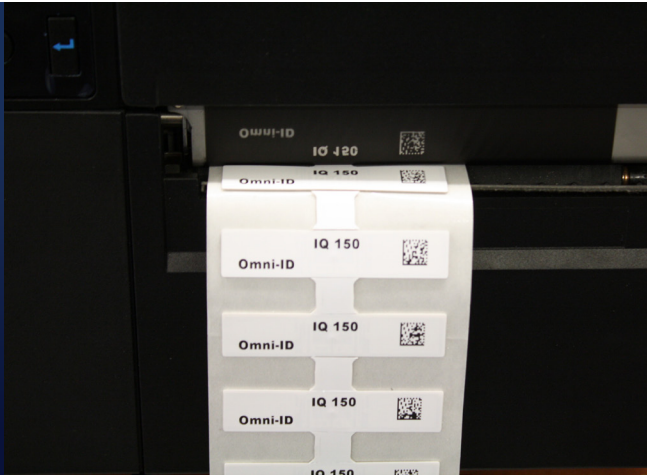


Omni-ID® IQ 150

The IQ 150 Ultrathin labels are designed for on metal tag functionality, within a small, low profile, easy to deploy label. Optimized for thermal barcode printers, the Omni-ID IQ 150 enables low cost and hassle-free RFID deployment. The Ultrathin labels redefine the standard for repeatability for on and off metal tagging applications demanding a very small low profile tag.



Applications

With innovative construction and excellent thermal barcode printer compatibility, the Omni-ID IQ 150 label is ideal for hassle free deployment of indoor asset management applications such as:

- ▶ IT, office, hospital and laboratory asset tracking
- ▶ Weapons, pipes, and road signs
- ▶ Warehouse management

Physical Specifications

Material	White synthetic label
Size (mm) ¹	55.0 x 12.5 x 1.1 with ground plane 55.0 x 12.5 x 1.0 without ground plane
Size (in) ¹	2.17 x 0.49 x 0.04 with ground plane 2.17 x 0.49 x 0.04 without ground plane
Weight (g)	0.25

¹Product dimensions shown above are the maximum. Batch to batch variation could be within 5%. Unspliced sections will be within 0.2mm tolerance.



Dimensions stated in mm
Supply format = 1000 labels per roll

RF Specifications

Protocol	EPC Class 1 Gen2v2
Frequency Range (MHz)	866-868 (EU) 902-928 (US)
Material Compatibility*	
With ground plane	Optimized for all materials
Without ground plane	Suitable for bare aluminum

*See IQ On-Metal Labels User Guide for further detail.

IC Types

Read Range with ground plane	Impinj Monza R6-P (standard)	Impinj Monza 4QT (custom option)
Fixed Reader ¹	Up to 1.6	Up to 1.3
Handheld Reader ¹	Up to 1.0	Up to 1.0
Memory ^{2,3}	EPC - 128(96) bits User - 32(64) bits Unique TID - 48 bits	EPC - 128 bits User - 512 bits Unique TID - 48 bits

¹Quoted performance achieved using standard testing methodology on Aluminium test plates. Read range is dependent on multiple factors such as; RFID reader transmit power and receiver sensitivity, asset material and environment. Please see the Omni-ID On Metal Labels User Guide for more detail.

²EPC and User memory are reprogrammable. UTID is locked at point of manufacture by IC manufacturer.

Related Products and Services

- ▶ **Omni-ID IQ 100** – First to market, global, small form factor tag optimized for thermal barcode printers.
- ▶ **Omni-ID IQ 600** – Ultrathin label providing on metal tag functionality, low cost and hassle free deployment.
- ▶ **Omni-ID IQ 800P** - Large premium label for plastic assets
- ▶ **Service Bureau** – Omni-ID offers a full service bureau for printing and pre-encoding Omni-ID tags at point of manufacture.



Environmental Specifications

Operation Temperature ¹ -40 to +85°C

Max Temperature Exposure ¹ -40 to +85°C

Application Temperature¹ +18 to +35°C

IP Rating IP68

Attachment Self-adhesive suitable for curved surfaces to a minimum radius of 58mm

Certifications



RoHS approved
CE approved

Printer compatibility^{2,3} Sato, Zebra, Honeywell

Warranty 1 year

1. Excludes adhesive options, consult adhesive data sheets for recommended temperature ratings.
2. Omni-ID labels are compatible with many leading printers. Contact us for more detail.
3. See Omni-ID printer guides for details on calibrating and operation.

See the **IQ On Metal Labels User Guide** for details on available IC & Ground Plane product options.

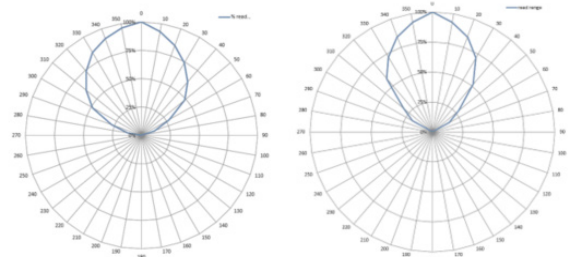


Omni-ID office locations: **US | UK | China | India | Germany**

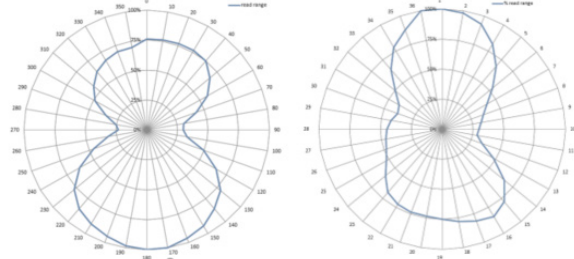
For product or technology inquiries email: sales@omni-id.com

Radiation Patterns

On Metal



On Liquid



Ordering Information

Order Numbers 125 – EU, US with Monza R6-P
132 – EU, US with Monza 4QT(custom)

Order Options: :303 Customization - 4 color static print
:315 Overlamination
:329 Without ground plane
:701 (Standard Service Bureau)

Supply Format 1000 labels per roll

Minimum Order Quantity	R6-P	M4QT(custom)
Standard label	1,000 labels	10,000 labels
Service bureau	1,000 labels	10,000 labels
Customization	10,000 labels	10,000 labels
Overlamination	10,000 labels	10,000 labels