



ZEBRA[®] ZQ500[™] Series

Mobile Printers

Quick Start Guide

Contents

In the Box	3
Overview	4
Removing and Installing the Battery	6
Charging the Smart Battery	7
UCLI72-4 Quad Charger (AC18177-5)	7
Smart Charger-2 (SC2) Single Battery Charger (P1031365-063)	8
AC Power Adapter (included in kit p/n P1031365-XXX)	9
Vehicle Cradle (P1063406-029)	10
4-Bay Power Station(P1063406-027)	10
Loading Media (ZQ510 Shown)	11
Printer Communications	12
Via a Computer	12
Via Bluetooth (NFC)	12
Via BT/WLAN	12
Printer Controls	13
Cleaning the Printers	14
Accessories	15
Mag Card Reader	15
Accessories cont.	16
Hand Strap (BT16899-1)	16
Shoulder Strap (BT11132-1)	16
Soft Case (P1063406-037/-038)	16
Accessories cont.	17
Belt Clip	17
Product Support	18



Always refer to the Important Safety Information data sheet shipped with each printer and the Technical Bulletin shipped with each battery pack. These documents detail procedures to ensure maximum reliability and safety while using this printer.



Works with:

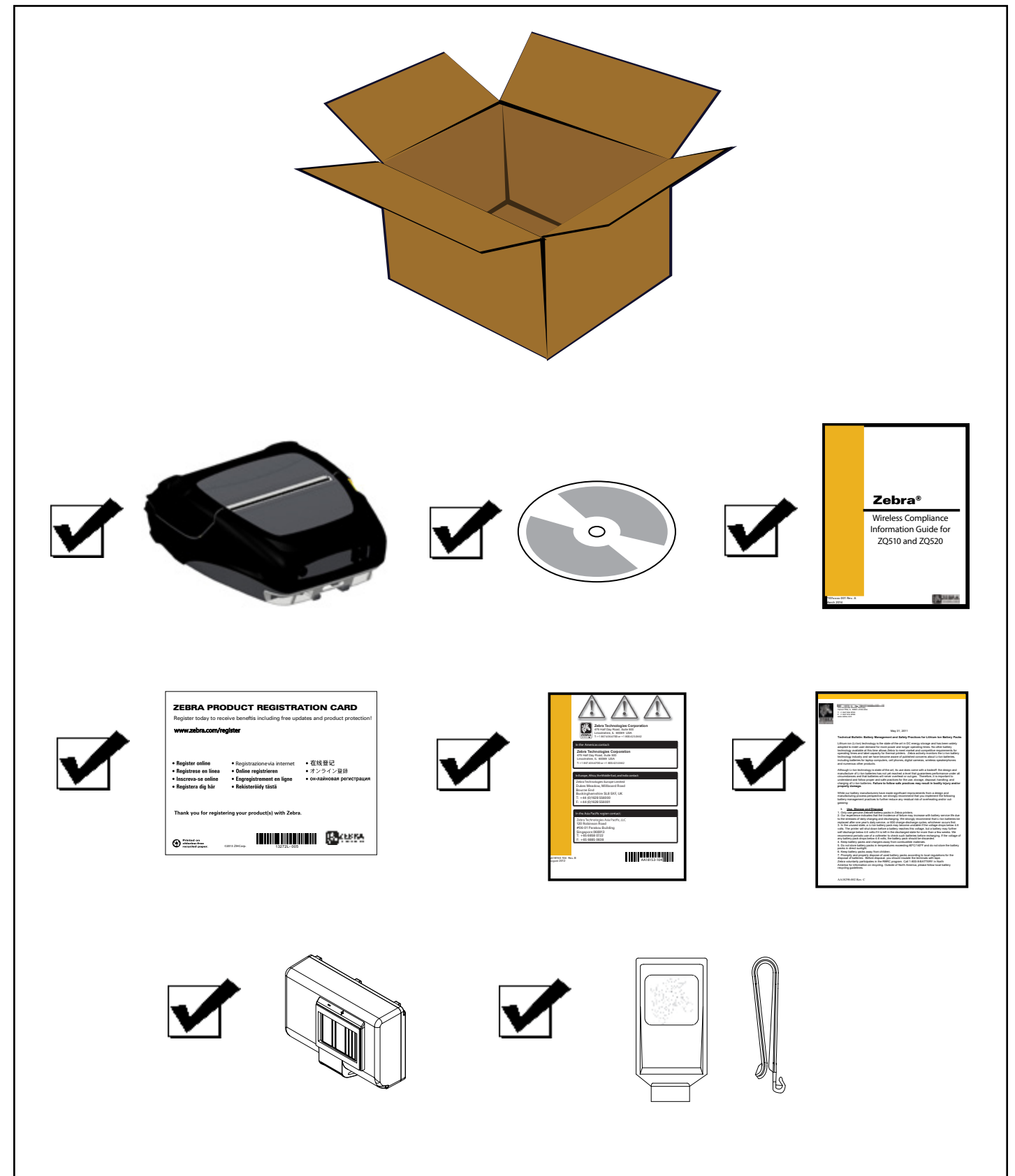
Made for
iPod iPhone iPad



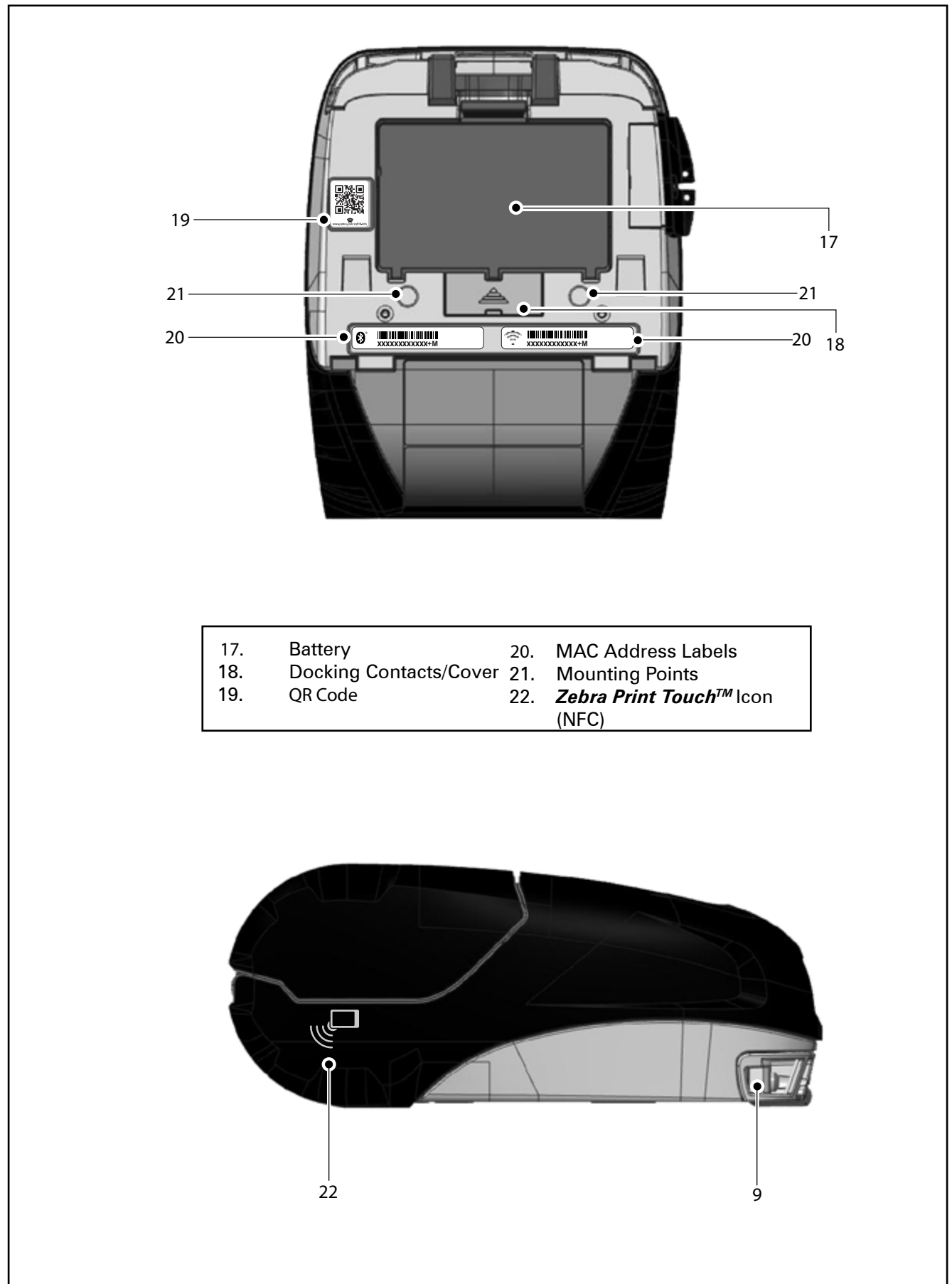
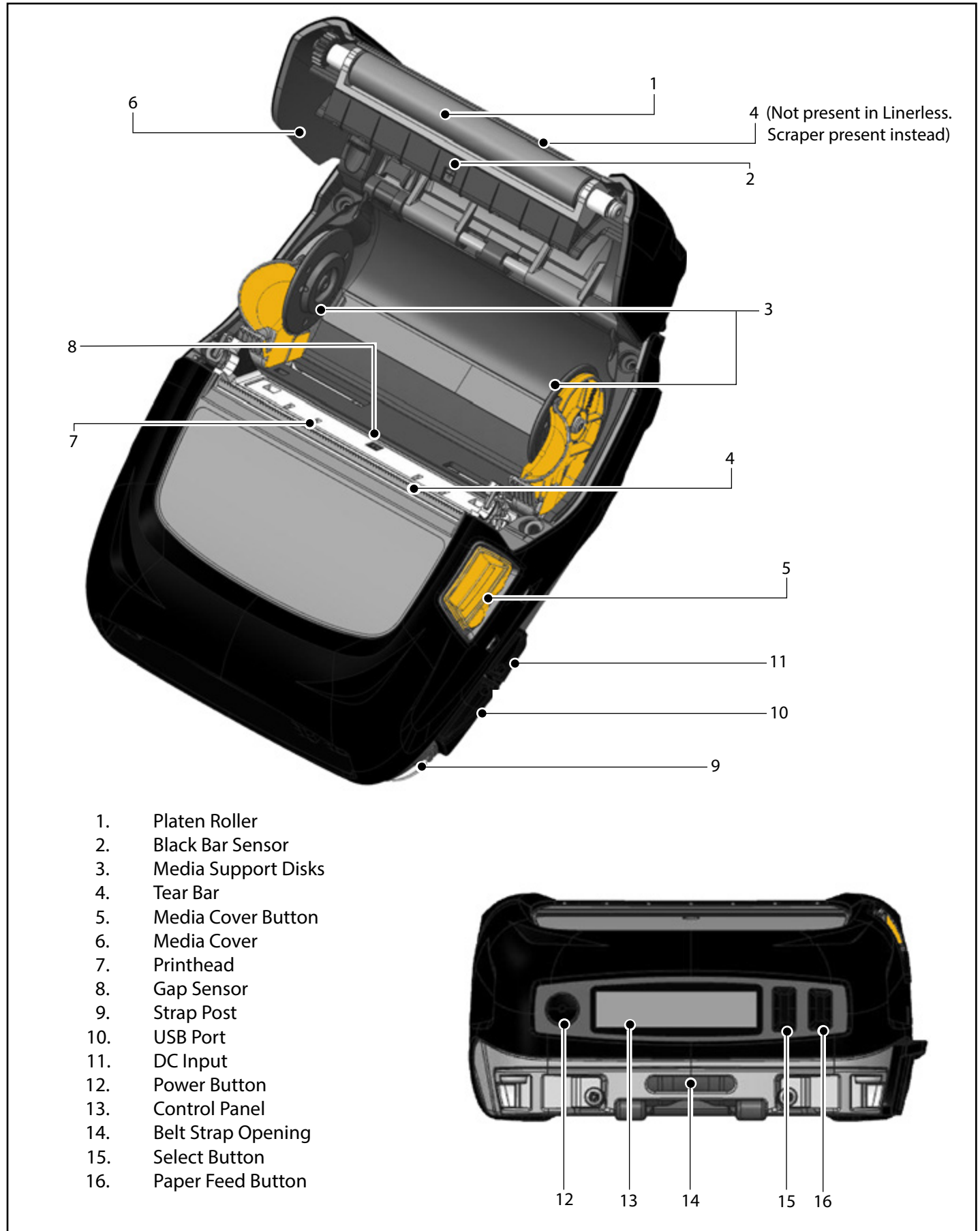
Certified:



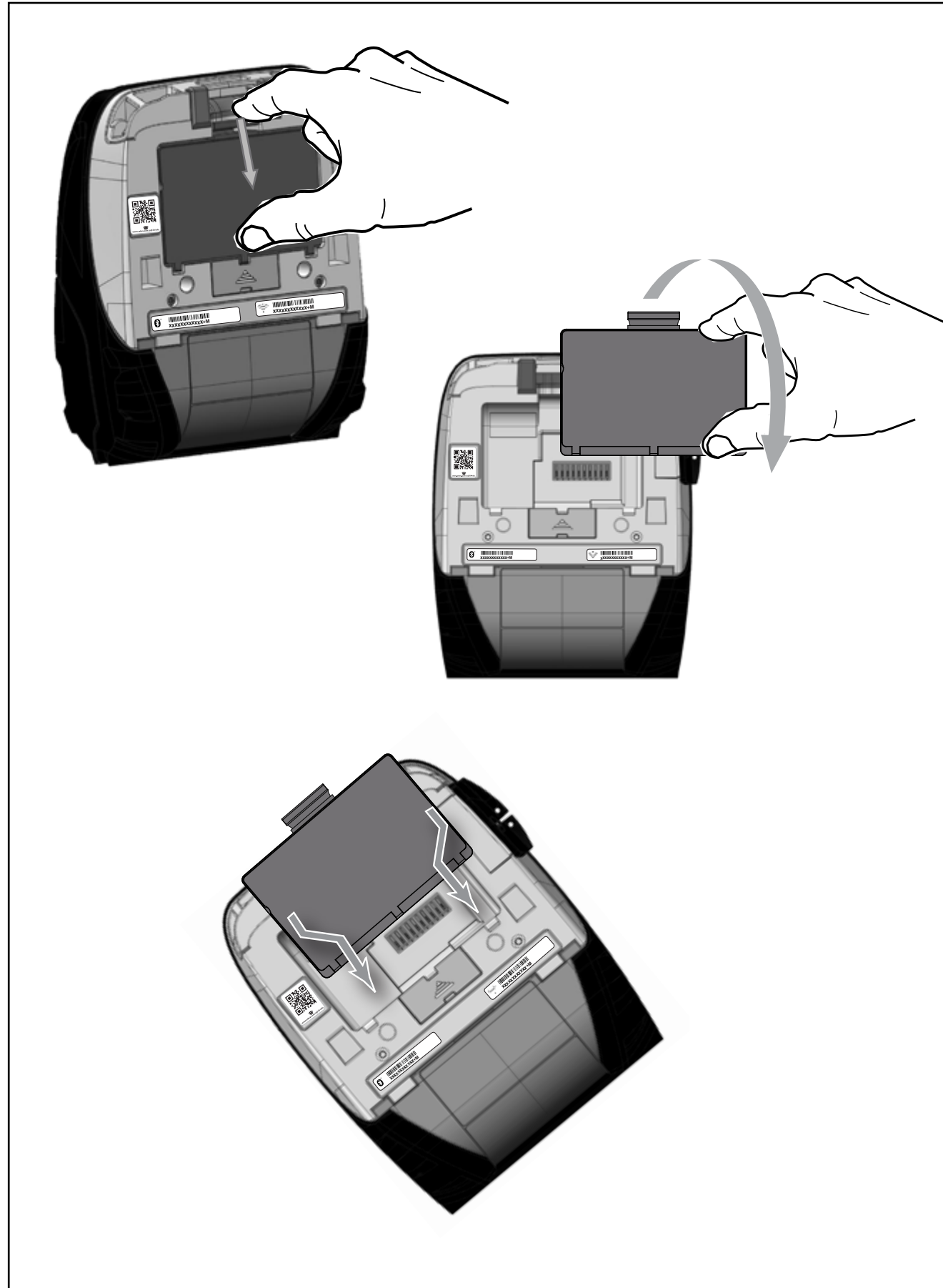
In the Box



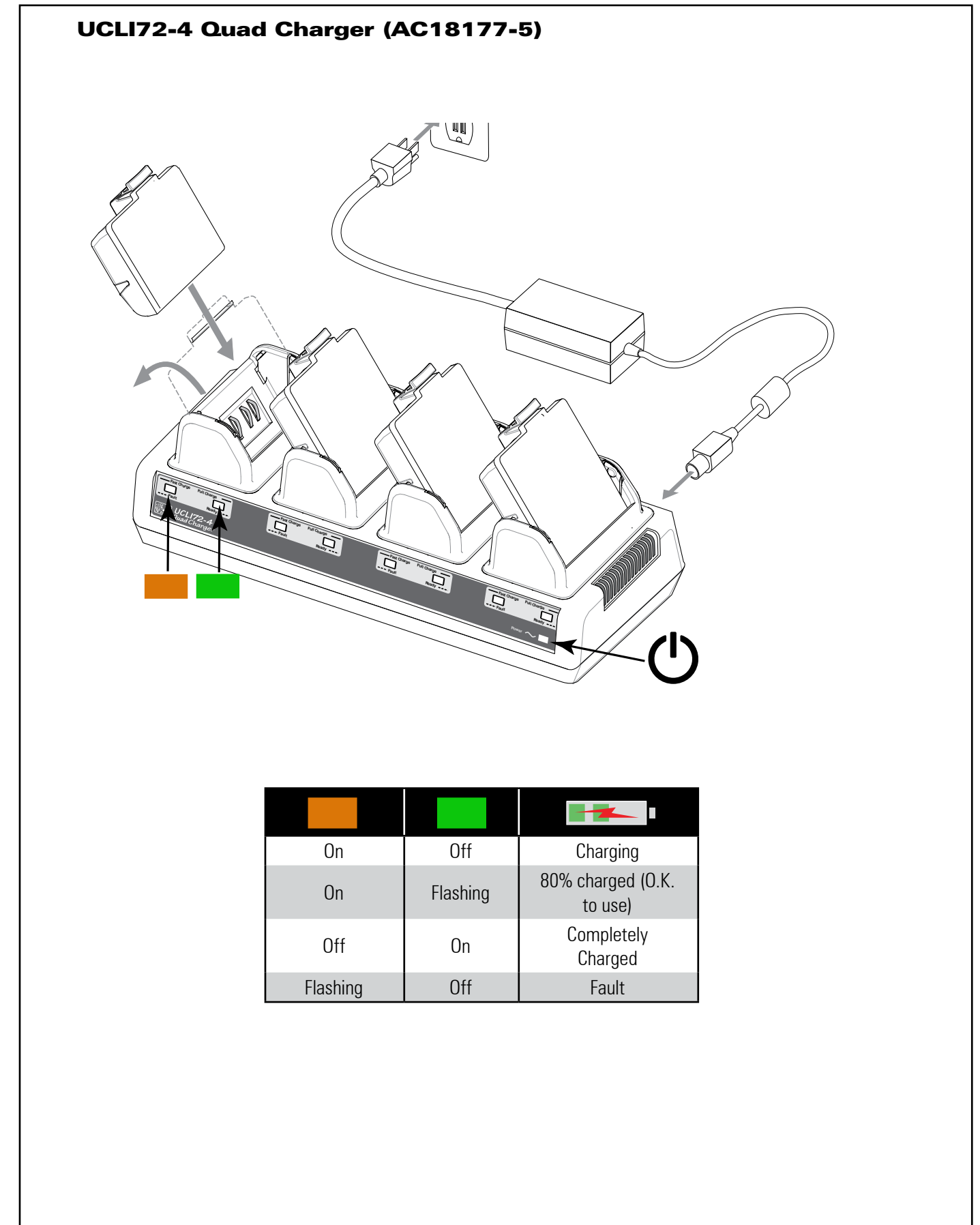
Overview



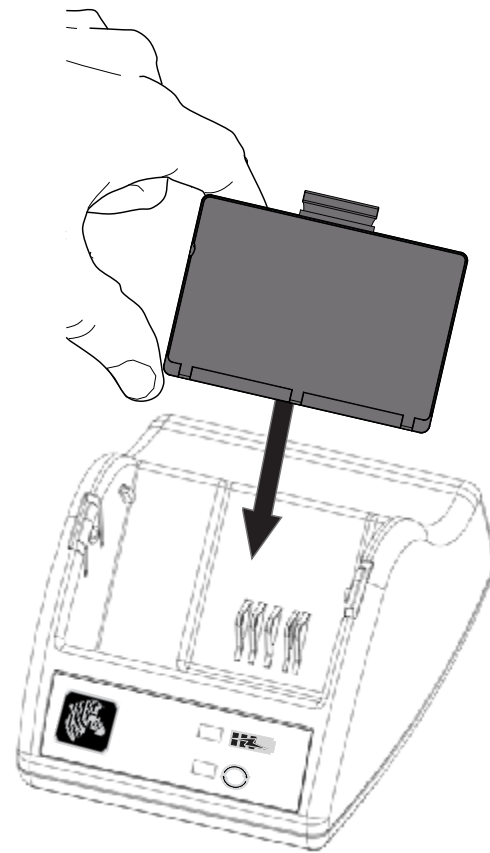
Removing and Installing the Battery










Charging the Smart Battery



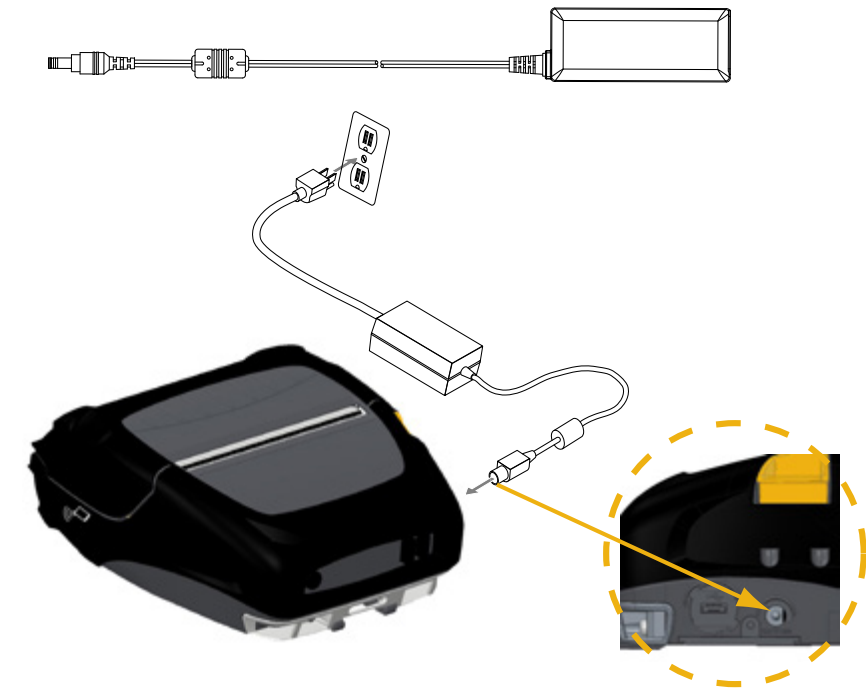
Smart Charger-2 (SC2) Single Battery Charger (P1031365-063)





				
Charge Status 	Fully Charged	Charging	N/A	Fault
Battery Health 	Good	Capacity Diminished	Past Useful Life	Unusable-Replace Battery

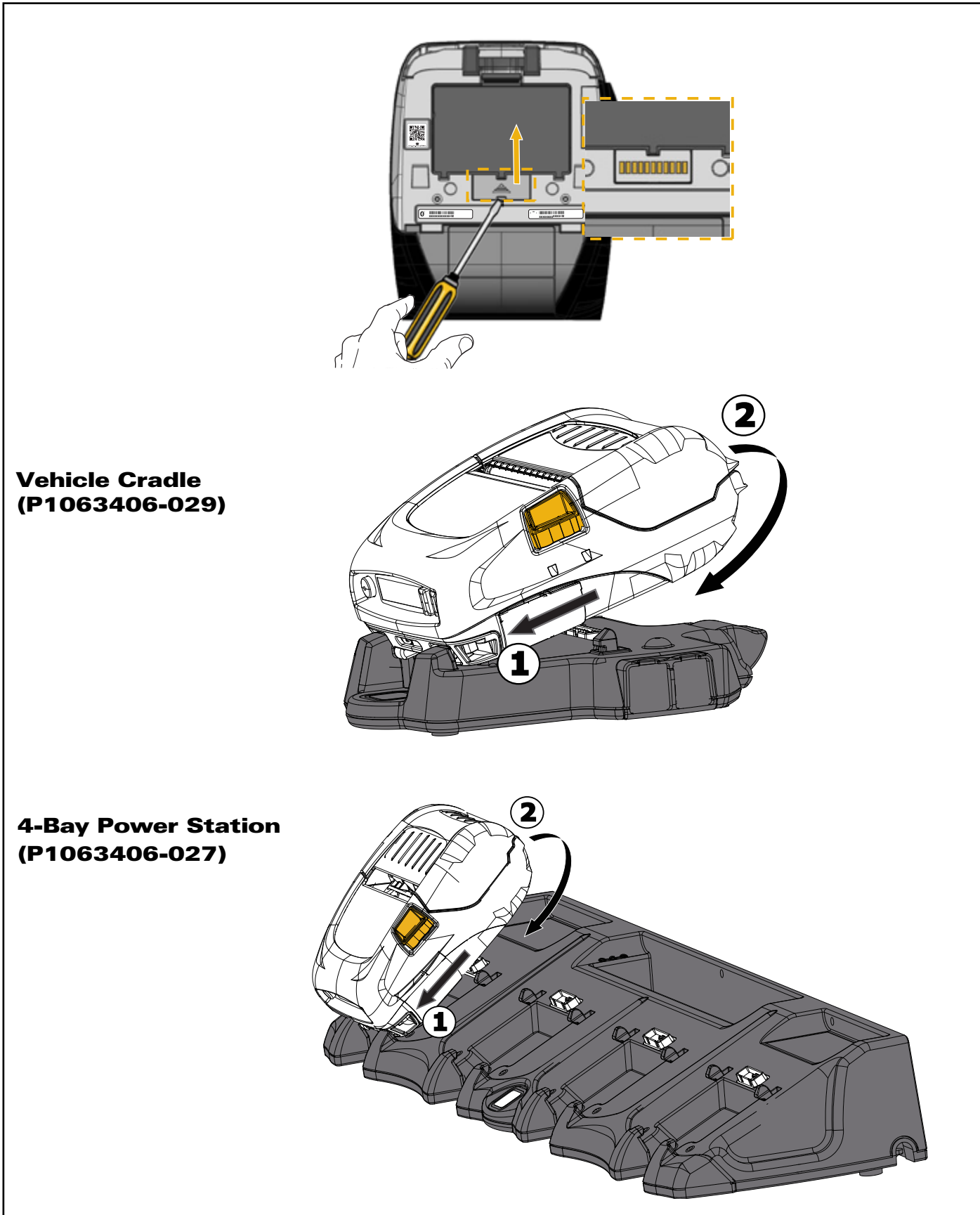
 **When the SC2 is plugged in but no battery is present, the Charge Status LED indicator will be green.**

AC Power Adapter (included in kit p/n P1031365-XXX)

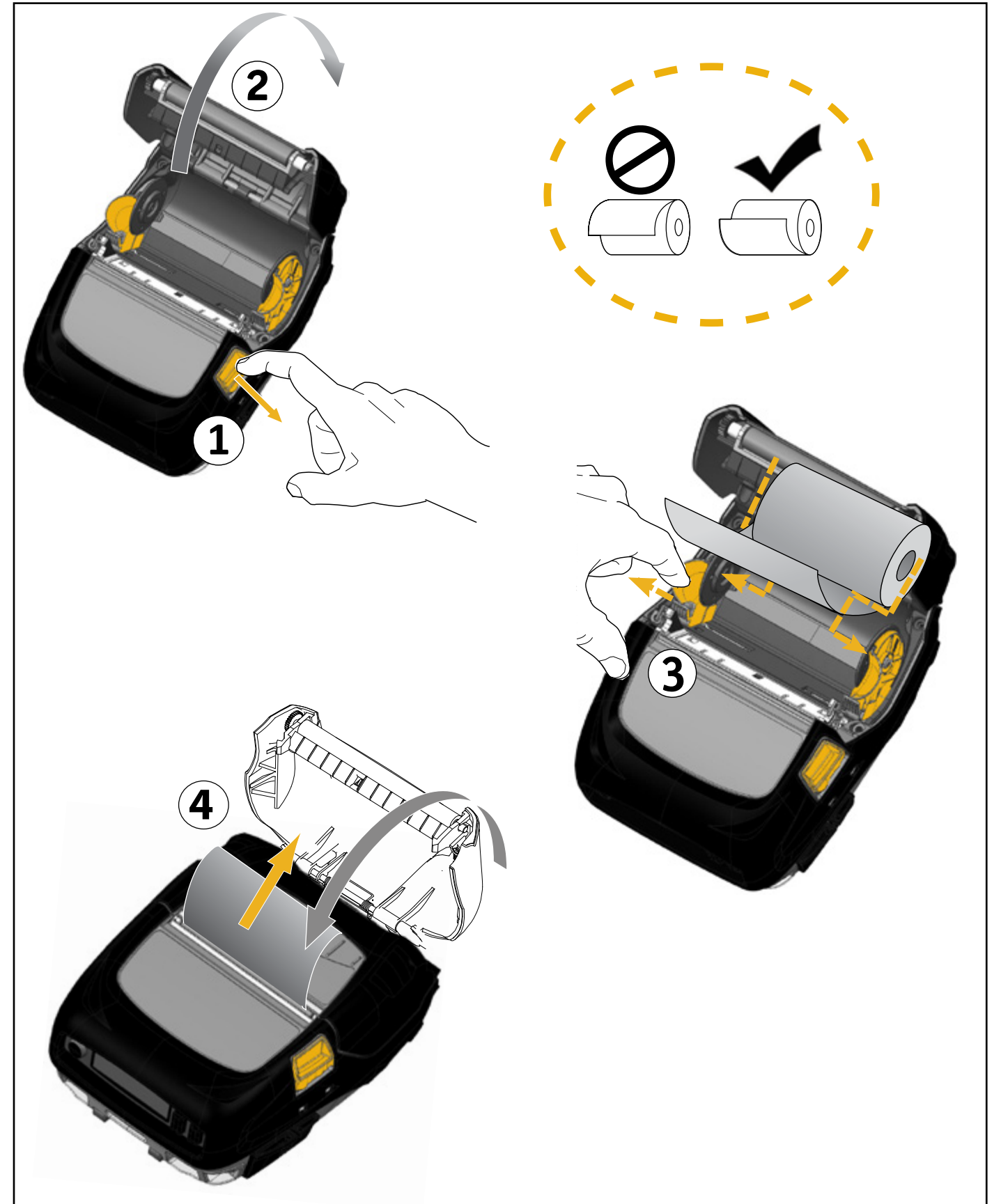


(Rubber door not shown)

-  **Batteries are shipped uncharged. Remove batteries from protective packaging and allow them to charge completely prior to initial use.**
-  **While it's possible to charge the battery when using the printer, charge times will increase under this condition.**

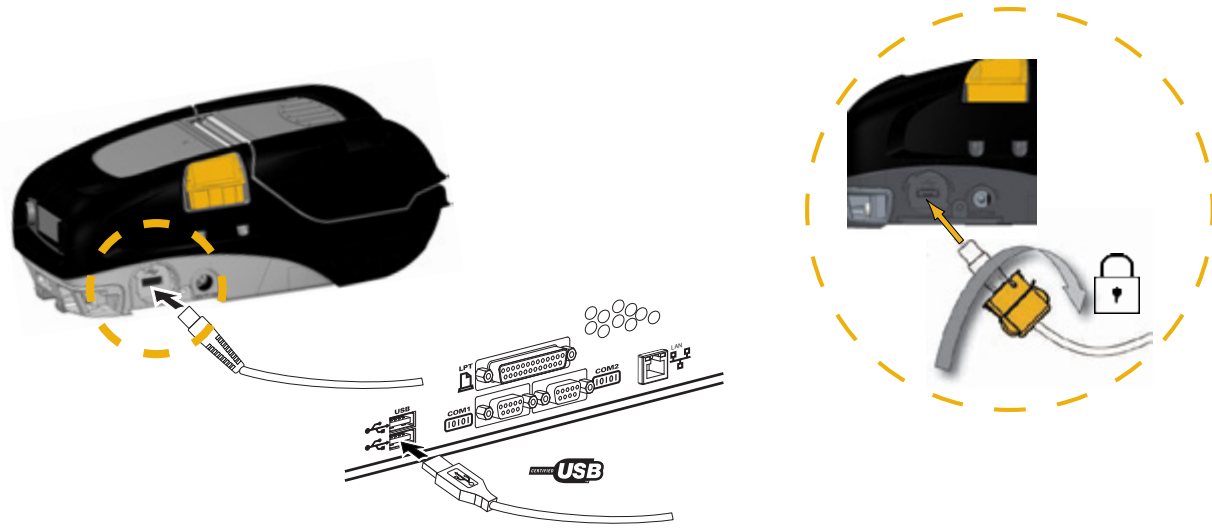


Loading Media (ZQ510 Shown)

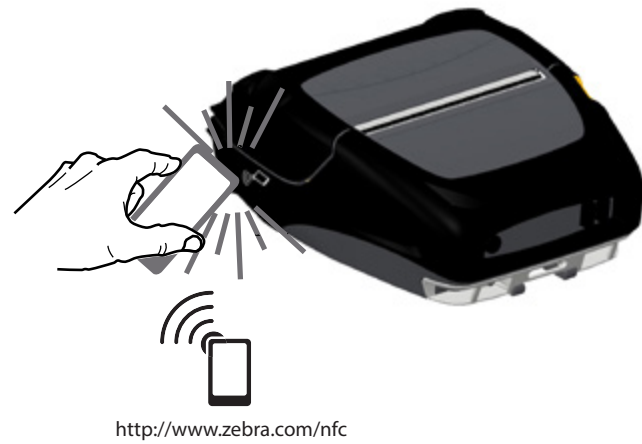


Printer Communications

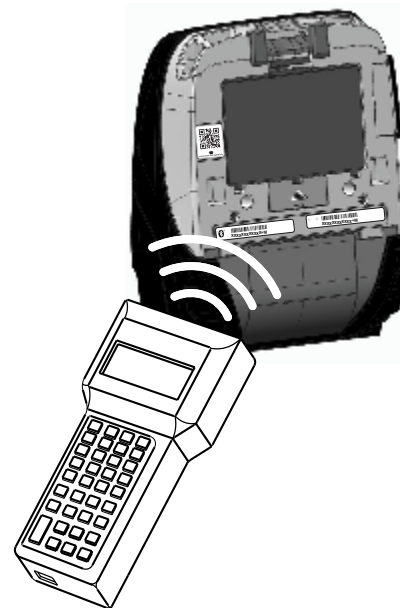
Via a Computer



Via Bluetooth (NFC)



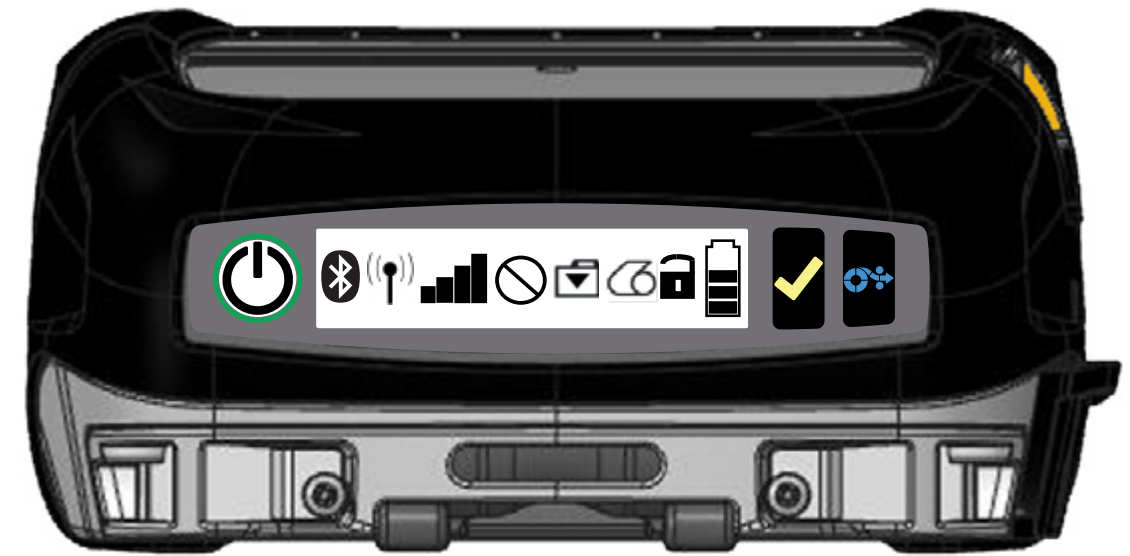
Via BT/WLAN



Made for
 iPod iPhone iPad

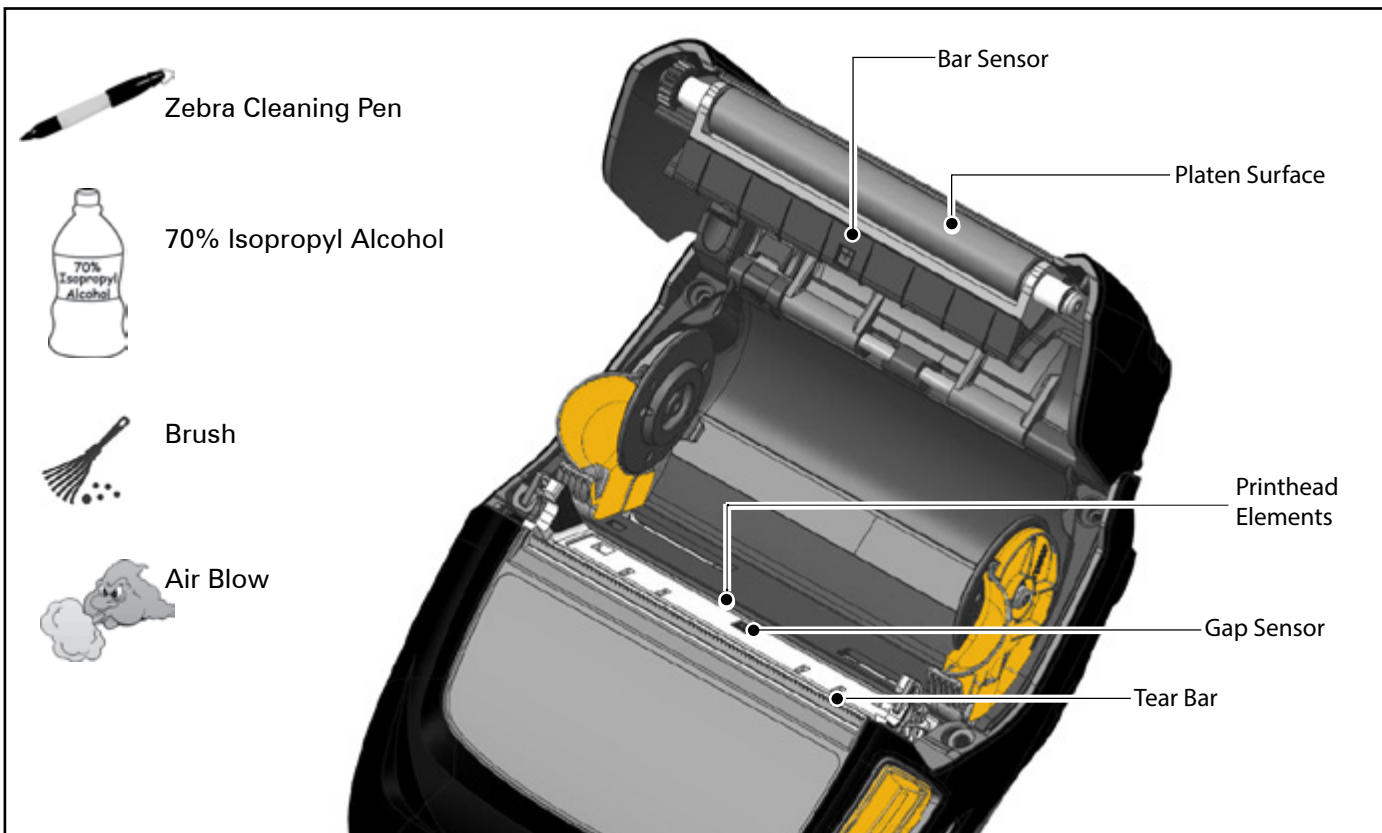


Printer Controls



- | | | | |
|--|--|--|--------------------|
| | Power
Green LED: Charged Battery/Battery Eliminator in | | Data |
| | Power
Solid Yellow LED: Charging
Blinking Yellow LED: Sleep Mode | | Media |
| | Power
Red LED: Battery Fault | | Cover Open |
| | Bluetooth | | Battery |
| | WiFi Connection | | Battery Eliminator |
| | WiFi Signal Strength | | Select |
| | Error | | Media Feed |

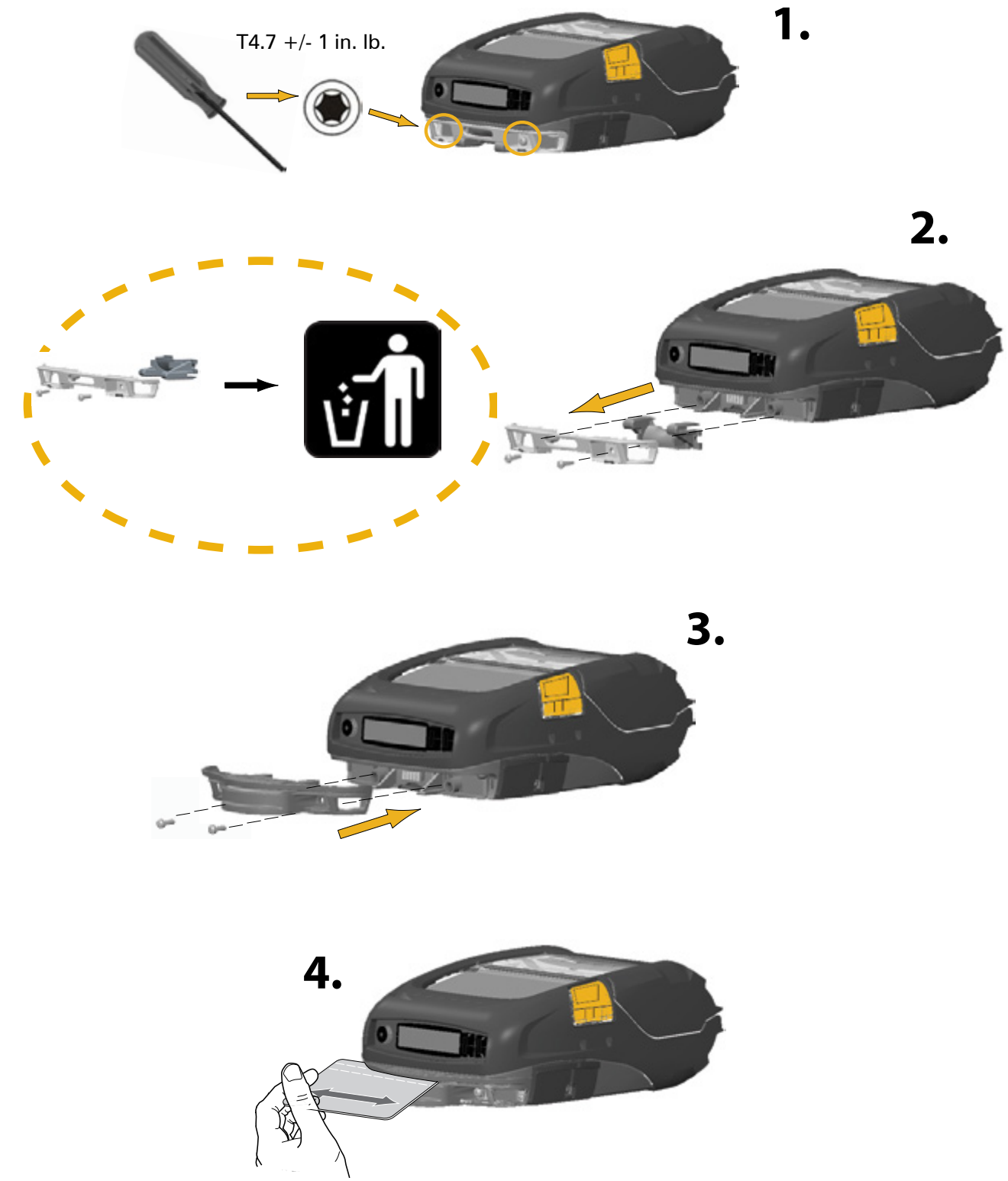
Cleaning the Printers



Area	Cleaning Method	Interval
Printhead		After every five rolls of media (or more often, if needed). When using linerless type media, cleaning is required after every roll of media.
Platen Surface		After every five rolls of media (or more often, if needed) Linerless media requires more frequent cleaning, i.e. after every roll.
Scraper (Linerless units only)		After every five rolls of media (or more often, if needed)
Tear bar		As needed
Exterior		As needed
Interior		As needed
Interior of units with Linerless Platens		After every five rolls of media (or more often, if needed)

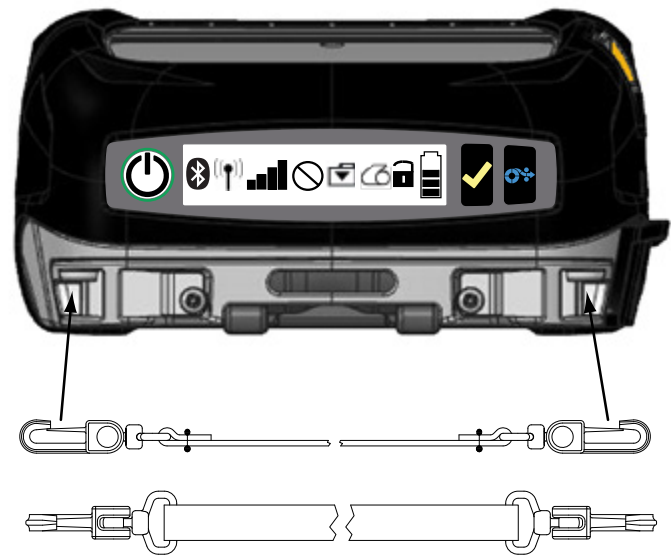
Accessories

Mag Card Reader

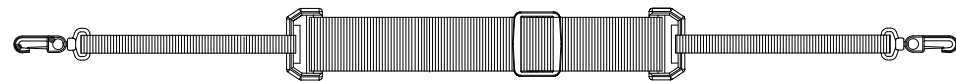


Accessories cont.

Hand Strap (BT16899-1)



Shoulder Strap (BT11132-1)

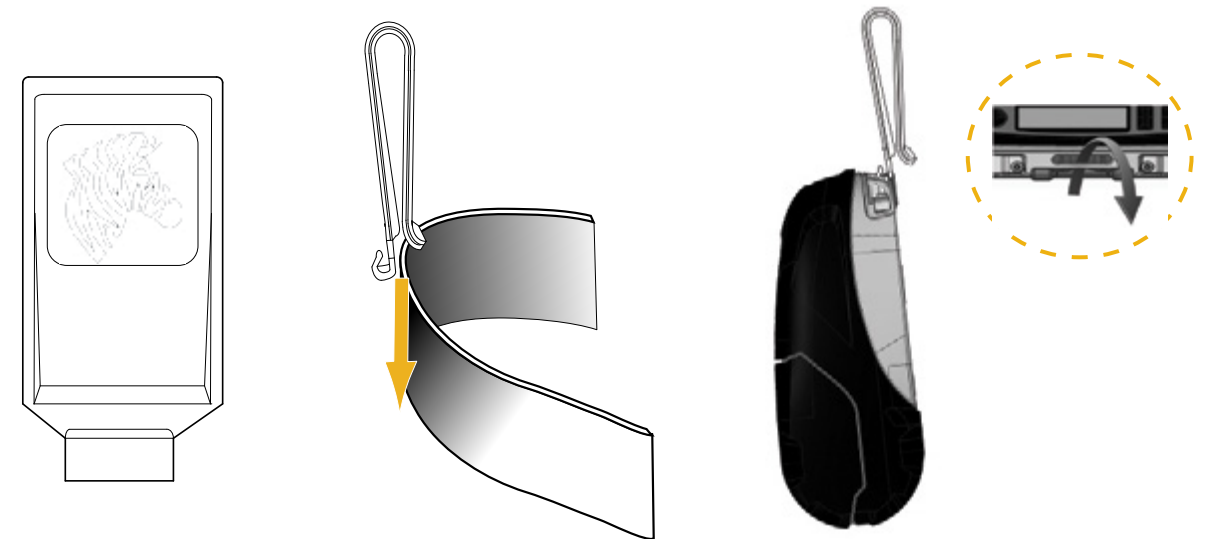


Soft Case (P1063406-037/-038)



Accessories cont.

Belt Clip



For a complete list of accessories, please refer to the ZQ500 Series User Guide (p/n P1070599-001) on www.zebra.com/manuals.



Complete and current documentation for the printers is provided by the ZQ500 Series User Guide available at: www.zebra.com/manuals.

Product Support

Zebra Technologies Corporation
475 Half Day Rd., Suite 500
Lincolnshire, Illinois 60069 U.S.A.
T: +1 847.634.6700
T: +1 866.230.9494 (USA only)



Zebra Technologies Europe Limited
Dukes Meadow
Millboard Road
Bourne End
Buckinghamshire SL8 5XF, UK
T: +44 (0) 1628 556000



Zebra Technologies Asia Pacific Pte. Ltd.
Regional Sales Office-Asia/Pacific
71 Robinson Road #05-02/03
Singapore 068895
T: +011/65 6858 0722



Zebra Technologies Corporation
475 Half Day Road, Suite 500
Lincolnshire, IL 60069 USA
T: +1 847.634.6700 or +1 800.423.0442